

2.92mm/2.92mm

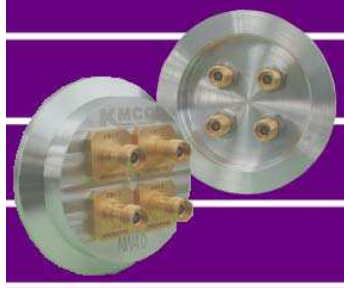
# DC - 40GHz, Hermetically Sealed, Coaxial Adapter

## DESCRIPTION

This "KPC292FFHA " Hermetically Sealed 2.92mm to 2.92mm Coaxial Adapter that

- DC to 40GHz,
- Low SWR and loss,
- Hermetic RF interface between vacuum and atmosphere environment,
- Small mounting space,

is designed for broadband devices, instrument and component testing use.



## SPECIFICATIONS:

### Electrical:

Frequency Range DC - 40 GHz  
 Return Loss >15 dB  
 Insertion Loss <0.45 dB  
 Electrical Length Below (Nominal)  
 Temperature Range -55 to +125 deg.C

### Mechanical:

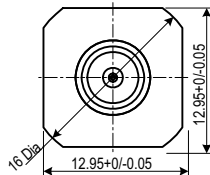
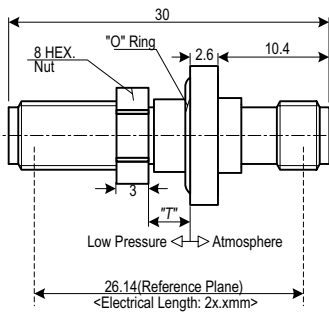
Body and Outer Conductors:  
 -Gold Plated Stainless steel and Brass  
 Inner Conductors:  
 -Gold Plated Beryllium Copper  
 Inner and Outer Conductors for seal:  
 - Gold Plated Fe/Ni/Co Alloy(KOVAR)  
 Insulator for seal: #7070 Glass(Corning)  
 Gasket for flange seal: Fluoroelastomer "O" Ring  
 Coupling Torque 90 N-cm(Nominal)  
 Connect/Disconnect Life >1,000 Cycles  
 He leak rate(\*) <math>1 \times 10^{-10}</math> Pam<sup>3</sup>/Sec (<math>1 \times 10^{-9}</math> atm cc /Sec)



**Production Status**  
 4 weeks Lead-Time will be available for shipping.

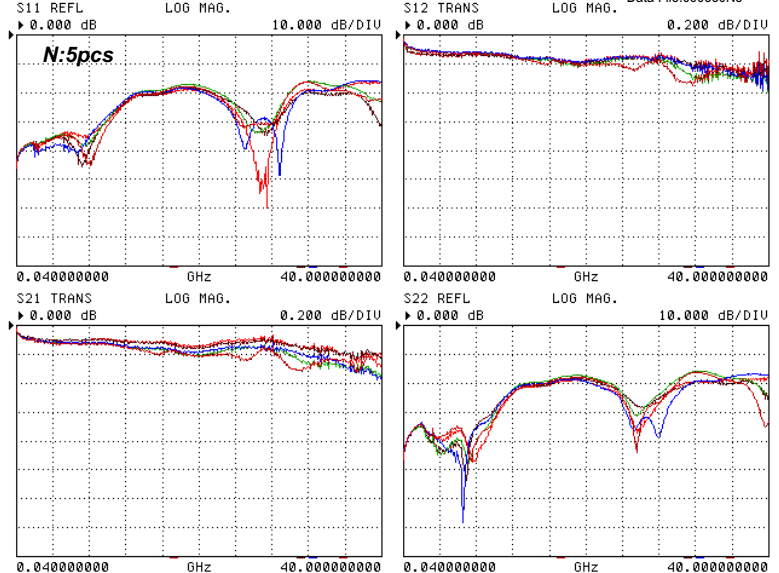
## TYPE: KPC292FFHA

2.92mm Female/2.92mm Female

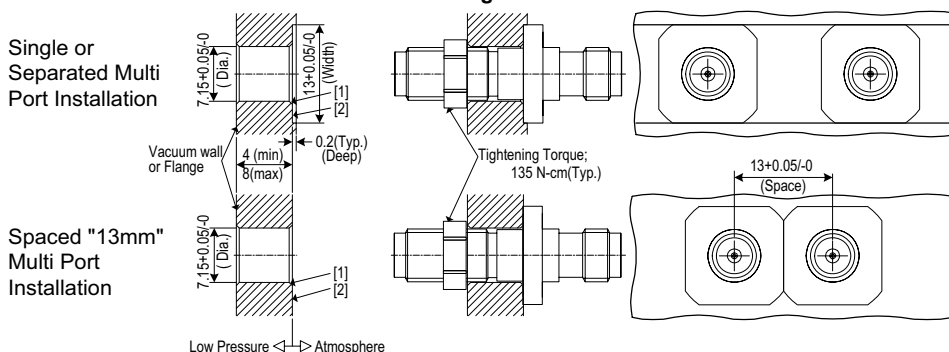


\*T\*: Vacuum wall or Flange thickness, 4(min) to 8(max) mm

## Typical Performance



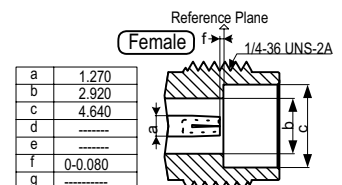
## Recommended Mounting Hole and Installation



Note:  
 - All dimensions are in Millimeters.  
 - [1] Chamfer : Less than 0.05 mm  
 - [2] Required "Smooth Surface"  
 - (\*) As Per MIL-STD-883E, METHOD1014.10, Test Condition A4

## Interface Mating Dimensions of KPC292 (2.92mm Connectors<math>\leftarrow</math>\*)

<math>\leftarrow</math> Matable with 3.5mm and SMA



Specifications Subject to Change Without Notice.

Copyright(C) 2006 KAWASHIMA Mfg. Co., Ltd. All rights reserved.

292FFHA Rev. - Mar. 2006



Kawashima Manufacturing Co., Ltd.

1-3-5 Higashiikuta, Tama-ku,  
 Kawasaki 214-0031 JAPAN

TEL: +81-44-911-7073  
 http://www.kmco.biz/

FAX: +81-44-911-9621  
 e-mail: sales@kmco.co.jp